



OFFICE CONCEPT

INSPIRING WORKPLACE DESIGN

DB&B: MORE THAN DESIGN

V11N2 AUG - NOV 2018

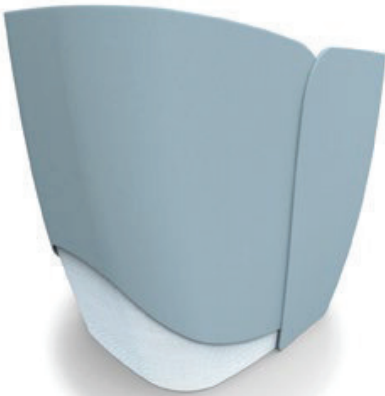
SGD13 BND13 AUD13.95 MYR22
HKD99 THB295 PHP295 INR395
IDR100000 VND150000



CO-WORKING WORKSPACES | THE 'LIVING' OFFICE | THE 'LIVING' OFFICE | SPATIAL IDENTITY | IN THE RIGHT FOOTSTEPS
MODULAR WONDER | VIVID ENCOUNTER | SIMPLY FABULOUS | SIT EASY - ANYTIME, ANYWHERE | CRAFTING TRADITION



2



1



3



1

LESS IS MORE

A chic solution to enlivening sterile work environments, the DV808-Porto is a versatile collection of tables with foldable worktops that dovetails with just about any context. Composed of painted steel or aluminum and fitted with a die-cast aluminum detail that plays up the prominent base, the high-quality materials that make up each table are brought to the fore through Cesare Bizzotto and Tobia's Nitsche's elegant design.

DVO.IT

2

SWEET SOLITUDE

Addressing the need for privacy and cool ergonomics, Mango transforms public areas into personal workstations in a pinch. This cleverly fashioned workplace solution by Boss Design offers the option of a high upholstered surround screen or an acoustically attuned privacy screen to minimise unnecessary distractions. Set on an articulated arm, the built-in writing tablet also allows one to comfortably position electronic devices, ensuring for ease and wellbeing.

BOSSDESIGN.COM

3

MODULAR WONDER

It's hard to imagine a more innovative meeting space than the Air³. This freestanding acoustic pod by Orangebox features a scalable system with interchangeable panels, allowing one the option to customise its look and feel at will. Touted as the world's most complete pod system, Air³'s reconfigurable quality as well as its advanced fire safety system and internationally patented opening roof system make it perfectly suitable for essential workspace needs.

ORANGETBOX.COM

FITTING INTERIORS

DISCOVER THE RIGHT FIT &
BALANCE WITH CAREFUL
MATERIAL SELECTION





EX30 by Artwright

ARTWRIGHT | OFFICE SYSTEM
DVO | PARO CHAIR
VITRA | ALLSTAR CHAIR
GIRSBERGER | MODELL STOOL
KOKUYO | REGION TABLE
OASIS | RAMMA SEATING

SIT EASY – ANYTIME,

A PRACTICAL, CONTEMPORARY STACKABLE CHAIR THAT SITS WELL ANYWHERE AND IN ALMOST ANY APPLICATION, THE PARA IS A MUST-HAVE FOR THE MODERN WORKPLACE.



ANYWHERE



THIS PICTURE: Designed by Enzo Berti for Della Valentina Office (DVO), the Para boasts elegant lines, effortless stacking and handling, and a space-saving footprint.

ARRANGED IN ROWS, CIRCLES OR INDIVIDUALLY, THE PARO IS IDEAL FOR CREATING INTERACTIVE SPACES THAT PROMOTE COLLABORATION OR SIMPLY AS A TASK CHAIR FOR TOILING ALONE. AND WHEN YOU'RE DONE, JUST STACK AND STORE AWAY UNTIL THE NEXT TIME.

THIS PICTURE: The Paro sports a curvaceous and visually light design defined by an iconic T-shaped back, gently curved arms and a comfortably wide seat.



Often seen as a simple solution for space-strapped users and a common feature in convention centres, classrooms and cafeterias, today, it appears, the stacking chair is a must-do in every designer's repertoire. Enzo Berti, it seems, is no exception.

Designed for Della Valentina Office, a major Italian manufacturer of office furniture, the Paro combines an aesthetic design concept with the principles of high volume production technology and material research. The result is a dynamic multi-purpose stackable chair that is a unity of form and function, bringing together comfort, durability and good looks.

Three elements make up the Paro, united through just two weldings: two metal tubular frames, one serving as a structural support and the other as armrests and the third, a wooden shell. Curvaceous and visually light — qualities that derive from the continued use of moulded wood — the Paro sports a clean and slim-lined design defined by an iconic T-shaped back, gently curved arms and a comfortably wide seat.

The wooden shell is offered in three finishes: unpadding, padded on the back and seat, or entirely padded on the front. Leather or fabric padding dresses up the stackable chair enough to render it suitable for more formal settings. In addition to the classic four-legged stackable, the Paro is also available with a four-star base.

With its highly durable frame made to withstand the demands of everyday office life, the Paro is still light enough for easy storage and stylish enough to complement a wide range of office settings. Arranged in rows, circles or individually, it is ideal for creating interactive spaces that promote collaboration or simply as a task chair for toiling alone. And when you're done, just stack and store away until the next time.

DVO.IT



THIS PICTURE: Caption with 20 to 25 word only. Caption caption caption caption caption caption caption caption caption caption.

OFFICECONCEPT.ASIA